



Eyre Peninsula Railway Preservation Society Inc.

PO Box 2736, Port Lincoln SA 5606

NEWSLETTER

March 2020

CURRENT PROJECTS, BIG CHANGES

There have been quite a few behind-the-scenes changes for the EPRPS and the Railway Museum in the last few months. Here is a run-down of what has happened and where we are on current projects.

Tax Deductible Status

The EPRPS has been granted Deductible Gift Recipient status by the Tax Office, which means that donations of \$2 or more are tax deductible. We anticipate that this will help in our ongoing fundraising efforts, especially for the new display shed.

As part of the process for obtaining this status, we restructured our committee to comply with the requirements of the ATO.

Committee Restructuring

Prior to our November meeting, we had a Committee which was responsible for all matters relating to the EPRPS and the Museum. At that meeting the old committee members (apart from Office Bearers) resigned. Three members were elected to join the Office Bearers as members of the new Committee which now exercises governance and financial oversight of the EPRPS. The new committee then met and promptly appointed the old committee as the new Operational Sub-Committee to manage the day-to-day running of the EPRPS and the Museum.

The new oversight Committee is:

- Peter Knife (President)
- Bob Prout (Vice-President)
- Trevor Hoskin (Secretary)
- Maggie Knife (Treasurer)
- Cr Faye Davis
- Peter Treloar MP
- Margaret Watt

We extend a big thank-you to Faye and Peter for stepping into the oversight role.

The new Operational Sub-Committee is listed on the back page of this Newsletter.

EFTPOS Facility

The Museum now has an EFTPOS terminal, so that credit and debit cards can be used for admission charges and for souvenir purchases. It has proved very popular, and has resulted in quite a number of sales which would not have occurred if the facility had not been available.

Online Donations

We can now accept online donations to the Museum (tax-deductible). You can link to the secure donations page via our 'Going Loco' page on our website

www.eprps.org.au/going-loco.html

or directly at

www.givenow.com.au/goingloco.

SELF-SERVE IMAGE KIOSK

The Museum received a Christmas present of sorts when we were notified that we had been successful in our application to the SA History Trust for a grant to set up an image kiosk for visitors to be able to explore our digital image collection.

The grant along with a contribution from Museum funds enabled us to purchase a stand-alone touch-screen display on a stylish metal pedestal, along with a special tiny computer to go inside the kiosk. The *VisiVault* software to run it was supplied courtesy of Peter Knife.

Visitors can explore the collection in several ways:

- You can select one or more available keywords from the grouped list on screen.
- You can enter text (such as a name) to search for in the image descriptions.

- If no selections are made in two minutes, the kiosk displays a random selection of images from anywhere in the collection, changing every 10 seconds.

Selected images can be displayed full screen, and even zoomed for greater detail.

At present there are nearly 6,000 photographs and plans available for viewing, and more are being added progressively.



The new image kiosk is a stylish but very useful addition to the Museum, and we hope it will be popular with visitors. Our own volunteers also find it interesting in quiet times!

DISPLAY SHED FOR 850 AND HAN3



GWA shunted 850 and bulk grain hopper HAN3 into Port Lincoln yard on 28 August 2019. Once shed funding is finalised, they will be craned across onto the “old passenger road”, then the shed erected around them.

Above: 850 and HAN3 are shunted into position by 1204. Their permanent home will be on the track to the right.

The side of the shed facing Railway Place, as well as the ends, will be in open mesh so that they can be seen from the street at all times.

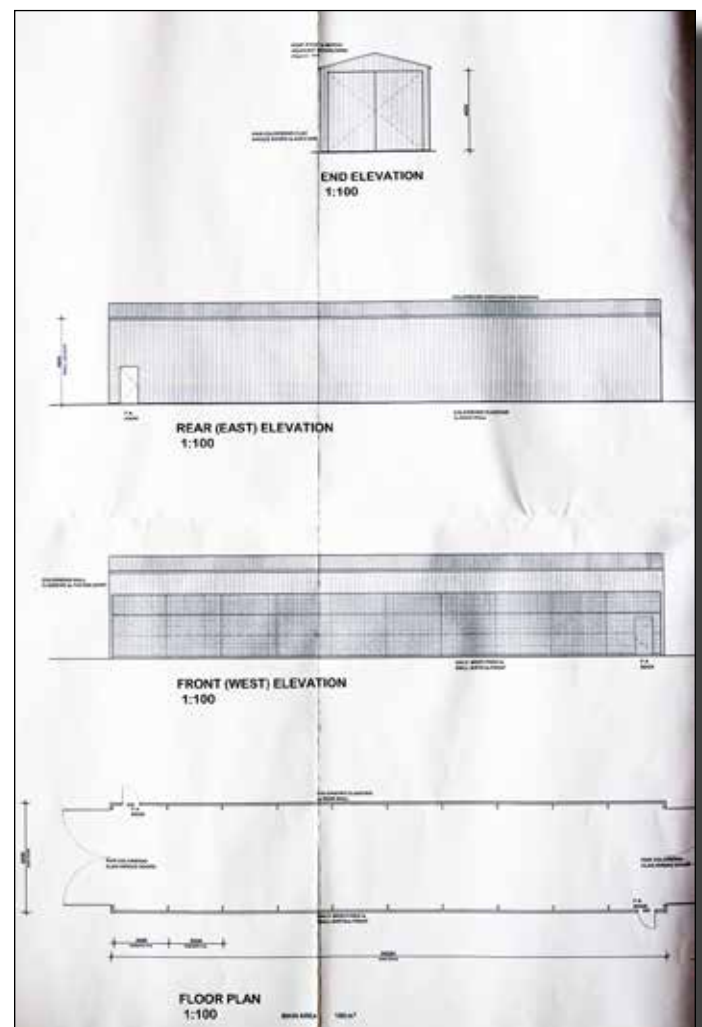
Below: Plans for the new display shed.

We have received Development Approval for the shed, and our grateful thanks are extended to Mick Heath and Lowe & Redding Design for their assistance in preparing the DA for submission.

Below left: 850 under its protective tarp.

Thanks also to the crew from Port Lincoln State Emergency Service who secured a large Viterra bunker tarp over 850 as a training exercise on 4 December.

With GWA now in the process of changing its name to ‘One Rail Australia’, 850 will most likely be the only preserved loco in Australia in the full GWA colours and logo.



RAILWAY MUSEUM 20TH ANNIVERSARY

A very successful day on 1 September marked the 20th Anniversary of the opening of the Museum. Around 70 visitors enjoyed a sausage sizzle courtesy of Port Lincoln Lions Club (and our special thanks go to the Lions Club for donating the stall profits to the Museum!).

Speeches by Mayor Brad Flaherty and

Peter Treloar MP highlighted the important place of the Museum in the Port Lincoln community. Tribute was also paid to the seven current Committee members who were there at the beginning: Don Atkinson, Trevor Hoskin, John McGeever, Bob Prout, Margaret Tilsner, Des Wiseman and Murray Wright. That's true dedication!

RAILWAY MUSEUM ON TROVE

The National Library's *Trove* is a huge online resource giving everyone online access to a vast array of material on Australia, with well over 160 million items currently available. In *Trove's* own words, it is "a collaboration between the National Library, Australia's State and Territory libraries and hundreds of cultural and research institutions around Australia, working together to create a legacy of Australia's knowledge for now and into the future".

You can search 155 million pages of newspapers and other documents, and almost 8 million photographs and other objects. If you haven't already tried it, just go to trove.nla.gov.au and be prepared to immerse yourself. It can be addictive!

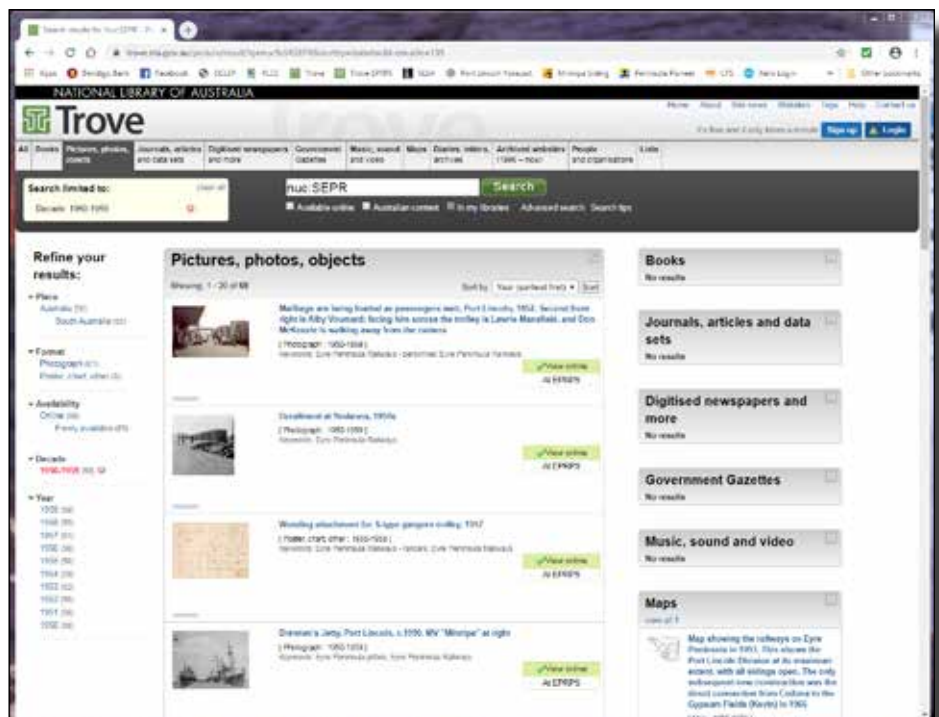
As a side effect of preparing the Museum's digital images collection for the *VisiVault* image kiosk (see page 2), the way was opened up for us to quite easily become a *Trove* partner

and contribute some of our collection to the online world. The *VisiVault* software used on the kiosk also has the ability to generate HTML pages formatted correctly for harvesting by *Trove*.

We now have over 800 photographs, plans and maps which are available on *Trove*, with more added at the beginning of each month.

You can view our online images at trove.nla.gov.au/result?q=nuc%3ASEPR, or just go to *Trove* and search for "Port Lincoln Railway Museum" in Pictures (for photographs and plans) or Maps.

An example of some Port Lincoln Railway Museum items on Trove.



FROM THE ARCHIVES - MINIMAL CREATURE COMFORTS

We tend to take basic comforts for granted now, even in a work environment, but it was not always so. In 1917 the Superintendent at Port Lincoln was given the latest motorised inspection car on the SAR. Car "M" was built specifically for the SAR requirements by CW Wittber, and included padded seats and a windshield. What more could one want?

The Superintendent (Mr Hoggarth) wrote to the Chief Assistant Engineer (CAE) on 16 June 1917, requesting a hood for Car M as the ***"weather is now very wet and the exposure in the open car severe"***.

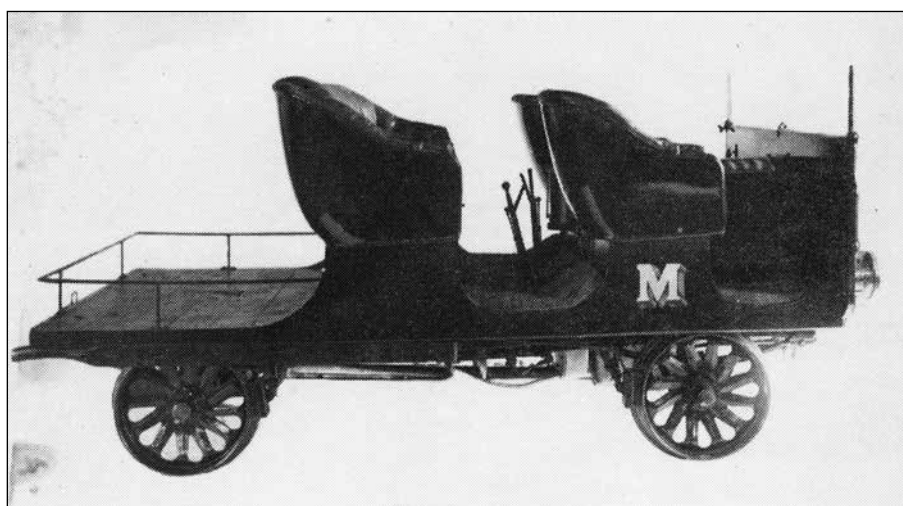
As could be expected in such situations, a lengthy correspondence ensued.

- On 30 June the Chief Engineer for Railways (CER) (Moncrieff) wrote to the CAE, asking what extra power would be needed to drive the car with a hood.
- Three days later the CAE replied that Car M has a 16 HP 4 cylinder engine with more than sufficient power. He also commented that ***"the inconvenience and discomfort in the present cars is only known to those who have used them"***.
- Nearly four months later, on 24 October 1917, the CAE wrote to the Railways

Commissioner requesting approval for the work, at a cost of £20.

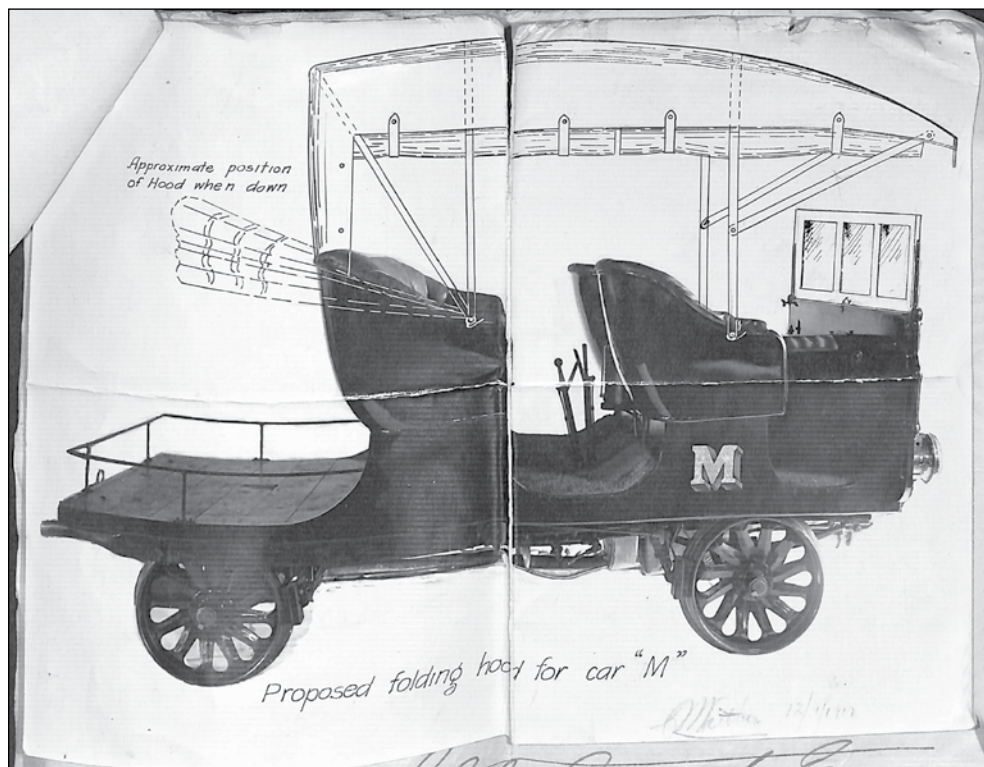
- The Commissioner replied on 5 November, advising that no funds were available for the work.
- On 18 December Hoggarth advised that sufficient funds remained under Debit Order L3588, a 1913 authorisation which included part of the cost of purchasing Car M in the first place.
- The CAE then wrote to the Commissioner on 8 January 1918 requesting approval on the basis of Hoggarth's advice. He emphasised that ***"to be exposed to extreme heat one day and rain the next as was experienced on my recent inspection, is not only exceedingly uncomfortable but tiring"***.
- Two days later the Commissioner gave his approval.
- The final word was from Hoggarth to the CAE six months later, on 19 July, when he advised that the hood had been fitted and was "very satisfactory".

This narrative was drawn from CME Docket 2034 of 1917 in the SA State Archives.

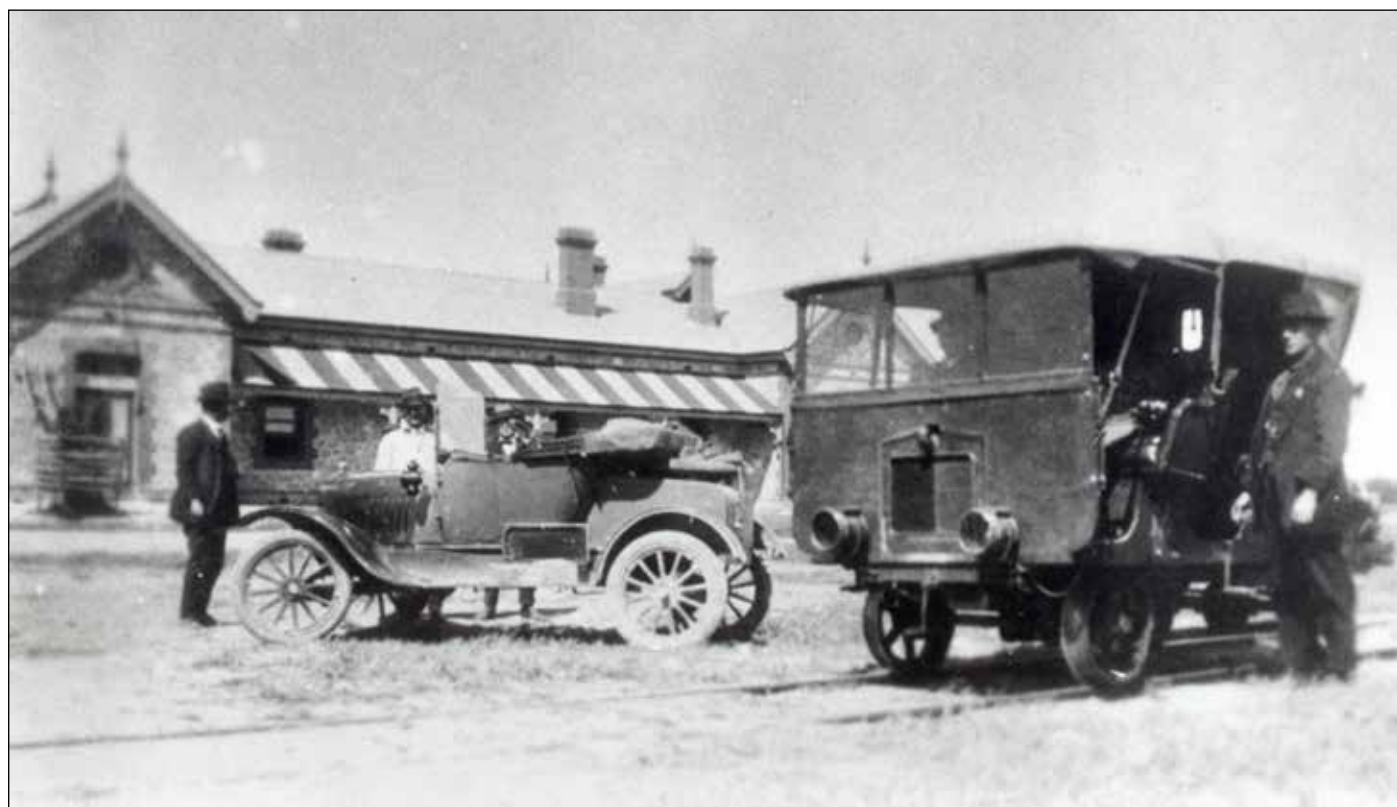


Builder's photo of Car M just prior to delivery from Wittber to the SAR. This shows the lack of protection, even for the Superintendent!

From the archives - Minimal creature comforts



This drawing accompanied the correspondence listed on the previous page. It shows a sketch of a canopy arrangement superimposed on the original Wittber photograph. The hood as built differed from this. Note that the drawing was signed by Wittber himself.



Wittber Motor Inspection Car 'M' standing opposite the Ceduna Hotel in 1922. The MIC is almost at the end of the Murat Bay Siding which ran from the main line at Ceduna station to the Murat Bay Jetty. This

shows the hood as actually constructed – a significant improvement when riding all the way from Port Lincoln. In fine weather, the hood folded back so that the passengers could enjoy the sunshine.

UPCOMING EVENTS

History Month - May

The theme for History Month this year is “change”. Given the cessation of grain haulage by rail on Eyre Peninsula last year, what more appropriate topic could the Railway Museum have than the changes which have occurred in grain handling over the years.

We will be preparing a special display of photographs tracing the many changes

which have occurred in grain handling on Eyre Peninsula, and it will be opened at 1 pm on **Sunday 3 May**, and will be available during Museum opening hours for the rest of May.

Annual General Meeting

The Annual General Meeting of the Eyre Peninsula Railway Preservation Society will be held at the Museum on **Thursday 16 July**, at 3:30 pm. All members and friends welcome.

DONATIONS

Donations to the EPRPS are very welcome, especially as we are facing significant costs with the new \$45,000 display shed for 850 and the HAN grain hopper.


With GWA (now known as One Rail Australia) in the process of vacating the top floor of the station building, we will also be

faced with extra ongoing costs which were very kindly absorbed by GWA in the past.

You can now make a secure online donation via

<http://www.eprps.org.au/going-loco.html>.

Remember, donations over \$2 to the EPRPS are now tax deductible!



ABN 60 690 052 848
Railway Place
Port Lincoln
South Australia 5606.

Donation Form

Donation amount \$

Please complete if you would like a receipt to be issued:

Mr Mrs Ms Miss Other

Surname: Given Name:

Postal Address:

State/Territory: Postcode:

Email:

Phone:

Cheque/money order (**please make cheque payable to Eyre Peninsula Railway Preservation Society Inc**)
 Direct Deposit: BSB 633-000
A/c No: 136921376
A/c Name: EPRPS Inc
 Credit Card (Mastercard or Visa only)

Card number

Expiry Name on card

CVV (three digits on back of card)

Signature: _____

Please return completed form (and cheque if applicable) to:

The Treasurer, Eyre Peninsula Railway Preservation Society Inc, PO Box 2736, PORT LINCOLN SA 5606
 or email to treasurer@eprps.org.au
 or phone the treasurer on 0417 401 364 with your credit card details

Donations over \$2 are tax-deductible

EPRPS Operational Committee 2019-20

President	Peter Knife	(08) 8684-3647	0428-119-287	president@eprps.org.au
Vice-President	Bob Prout	(08) 8682-2914		
Secretary	Trevor Hoskin	(08) 8682-6669	0428-826-669	secretary@eprps.org.au
Treasurer	Maggie Knife	(08) 8684-3647	0417-401-364	treasurer@eprps.org.au
Committee	Don Atkinson	(08) 8682-4077	0427-824-077	
	Neil Lihou		0412-340-134	
	John McGeever	(08) 8682-2002	0416-069-035	
	Margaret Watt	(08) 8682-1361		
	Des Wiseman	(08) 8684-6122	0428-846-122	
	Murray Wright	(08) 8682-4628		

Website: <http://www.eprps.org.au>

Eyre Peninsula Railway Preservation Society Inc
PO Box 2736
Port Lincoln SA 5606

Postage
Paid
Australia